

RISEN SAVIOR LUTHERAN CHURCH

23914 S. Alma School Road ■ Chandler, AZ 85248
Church: 480.895.6782 ■ Early Learning Center: 480.802.1505

May 2017 Newsletter

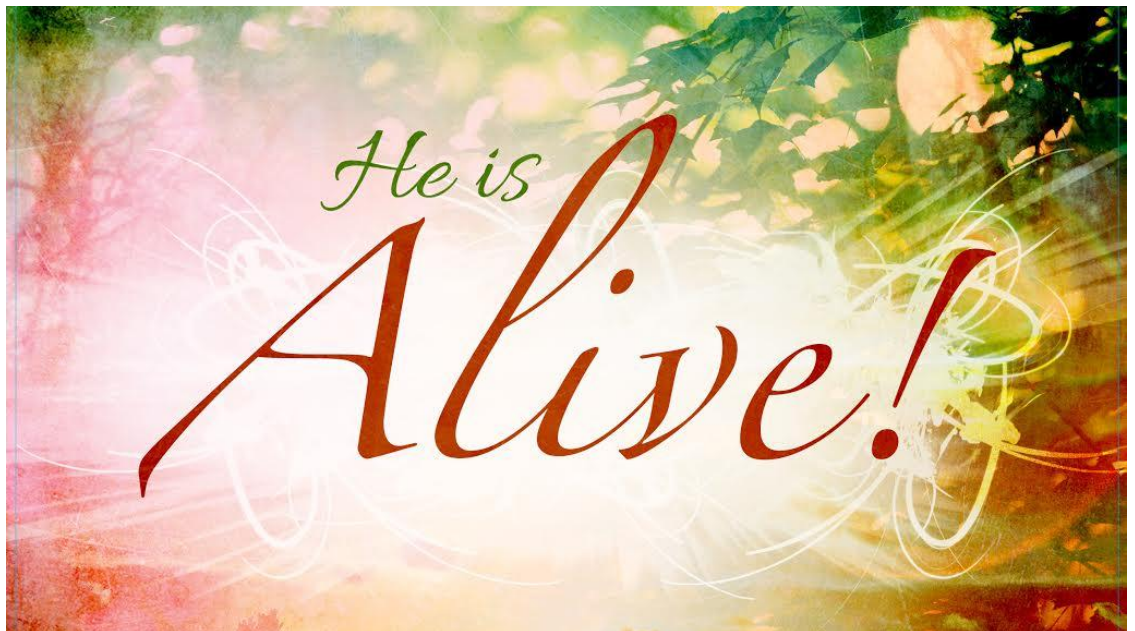
Rev. Ronald Burcham
Senior Pastor
burchamr@rslcs.org

Rev. Mark Hoffmann
Associate Pastor
of Congregational
Care
hoffmannm@rslcs.org

Joel Endicott
Director of Worship
endicottj@rslcs.org

Susan Mello
Business Manager
mellos@rslcs.org

Linda Pauley
Director of Early
Childhood Education
pauley@rslcs.org



- New Member Class p.3
- Ignite Confirmation p.5,6,7
- Vacation Bible School p.10
- Spring Food Drive p.17
- Financials p.19

Worshiping

Bound Together

If you want to see them you will have to have keen eyesight. Once they were so numerous you literally ran into them unknowingly. Now, they are nearly non-existent and experts predict that within the next month they will be completely wiped out, gone from the valley. Yes, the migration of Great Eastern and Northern Snow Birds has begun the long journey back to their respective summer dwellings.

It was only a few months ago that they filled streets and aisle of every store. They filled the valley with energy and excitement, but now most have departed. Those who remain nervously look at the thermometer wondering if one can really survive temperatures over 100 degrees! Soon they will be gone too...and we will miss them. We will miss their warm smiles, the various regional accents, and the enthusiasm that they generate.

We know that they will return beginning next fall and winter. Once again the streets will be filled with a rainbow of different colored license plates. Friendships will be renewed and new ones will be forged. In the meantime, many miles and time zones will separate us. Yet, there is something that connects us to our friends that spend the summer months in other parts of the country. We will keep up with each other's lives via e-mail, Facebook, and perhaps an occasional call. Even if we don't communicate through the summer there is still a connection, that is how it is with friends and relationships. Geography cannot define or destroy meaningful relationships. We have a connection.

For Christians this connection is even stronger. The Apostle Paul wrote: "so we, though many, are one body in Christ, and individually members one of another." (Romans 12:5) The connection is a unique one that is different than friends or families, although we would describe ourselves as the family of God. The faith that Christians share connects them to one another. In my experience this connection transcends gender, race, language, and geography. I have had the privilege of meeting Christians in Uganda, Japan, Israel, Canada, and the Dominican Republic. Having never met before there was an instant connection in Christ with the people in each of these countries. Jesus binds us together in an unmistakable way and we are better together than we are apart.

In the same way whether you are a year round resident or part of the year we all have a bond in our love for the valley of the sun. I pray that you also know a deeper bond and have a love for the fellowship of those who love the Son.

Pastor Ron

Sunday Worship Services

7:30 Traditional

8:50 Contemporary – Praise Team

10:10 Contemporary – Praise Team

11:30 Traditional

Communion at ALL 11:30 services every week.

Communion at ALL services 1st, 3rd, 5th Sundays.

Church office hours are **8:00am – 4:00pm, Monday – Friday**

Nursery During Worship

Our Nursery is available at all services for children aged 0-3; turn to your left when coming through the main front doors and follow the signs. For the safety of all our kids, please sign your children in and out. **Adult volunteers** are needed in the nursery during the 10:10am service. If you can help, please contact the church office at 480-895-6782.

Connections: New Member Orientation

If you're interested in getting connected and finding out more about who we are at Risen Savior and joining our church, please call the church office, **480-895-6782**.

New Member Class on Wednesdays

1. May 17th
2. May 24th
3. May 31st
4. June 7th
5. June 14th
6. June 21st

Class Time 6:30 - 7:45pm in The Pathway Center – South Conference Room

New Member Celebration

Sunday, June 25th, 10:10 service

Risen Savior Sunday School News



Jesus and me

aka Sunday School at Risen Savior

All about JAM!

Risen Savior's Sunday School Ministry

- Every lesson points to Jesus
- Highly interactive lessons come fully loaded with hands-on activities, video, music and discussion in both small and large groups
- Curriculum covers the entire Bible—Genesis to Revelation—in three years

Come join in the fun on **Sunday mornings at 10:10 am** as we learn about Jesus and grow in love for Him! All children Age 3 - Grade 5 are welcome. Check in near the Sanctuary, meet in second floor classrooms.

Questions? Contact Shelley Nelson, nelsons@rslcs.org

Many Thanks! Thanks to the generosity of our Risen Savior family, children in JAM! Sunday School are learning the real meaning of Easter. On Palm Sunday, children received age-appropriate Easter books that were donated by members of Risen Savior. The bookplates that donors signed made the books extra special – a treasure that children are likely to keep for years!



You can make a difference!

Your tax credits help children attend Lutheran schools where they grow in their faith each day. It's no cost to you, yet priceless to a child.

Learn more at ALSOsto.org.

Ignite Confirmation Ministry

Ignite is where faith is formed, knowledge is gained and hearts are changed. It sparks discovery, conversation, friendship and Bible engagement. Ignite is a step in a lifelong walk with God where the top priority is a vibrant relationship with Him.



On Maundy Thursday, we remembered Jesus' Last Supper with His disciples, and 19 youth in Ignite received their First Communion.

Eleven youth will confirm their faith during the Worship service at 10:10 am on **Sunday, May 7th**. They shared their favorite Bible verses with you. Enjoy!



James Trestin Dean

"... though we stumble, we shall not fall headlong, for the LORD holds us by the hand."

Psalms 37:24

Cullen Dougher

"For I know the plans I have for you," declares the LORD, 'plans to prosper you and not to harm you, plans to give you hope and a future.'"

Jeremiah 29:11



Mason Hickel

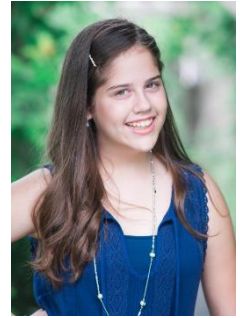
"So do not fear, for I am with you; do not be dismayed, for I am your God. I will strengthen you and help you; I will uphold you with my righteous right hand."

Isaiah 41:10

Emma Loop

"For ever since the world was created, people have seen the earth and sky. Through everything God made, they can clearly see his invisible qualities—his Eternal power and divine nature. So they have no excuse for not knowing God."

Romans 1:20



Megan Mello

"Fear not, for I have redeemed you; I have called you by name, you are mine...you are precious in my eyes, and honored, and I love you."

Blake Oman

"And whatever you do in word or deed, do all in the name of the Lord Jesus, giving thanks to God the Father through Him."

Colossians 3:17



Kami Padilla

"Do not conform any longer to the pattern of this world, but be transformed by the renewing of your mind. Then you will be able to test and approve what God's will is—his good, pleasing and perfect will."

Sophia Reitano

“For I know the plans I have for you,’ declares the LORD, ‘plans to prosper you and not to harm you, plans to give you hope and a future.’”

Jeremiah 29:11



Savanna Smith

“Don’t let anyone look down on you because you are young, but set an example for the believers in speech, in conduct, in love, in faith and in purity.”

1 Timothy 4:12

Hannah Torre

“For I know the plans I have for you,’ declares the LORD, ‘plans to prosper you and not to harm you, plans to give you hope and a future.’”

Jeremiah 29:11



Ashley Wellik

“Have I not commanded you? Be strong and courageous. Do not be afraid; do not be discouraged, for the LORD your God will be with you wherever you go.”

Joshua 1:9

Small Group Bible Studies

Adult Forum - Led by Pastor Harold Teuscher

Join us **every Sunday at 8:40am – 9:40am** in the Fellowship Hall as we continue with a series of lessons called “The Week That Changed the World”. On **May 14th** we begin a new series on “Christianity and the Competition”. Our country is littered with competing religions and philosophies, each claiming to be right. We’ll look briefly at the secular sources on which the groups base their beliefs and compare them with the Bible. We’ll pay special attention to the more popular groups in our country, such as: Hinduism, Buddhism, Islam, Mormons, Jehovah’s Witnesses, Scientology, and various cults. We’ll also offer a Christian response, with the assistance of a video by Professor Paul Maier and other Christian authors. Pastor and Julie will prepare a brief outline of the material each week.

Men’s Early Bird Saturday Gathering

The Men’s Early Bird Saturday Gatherings continue **Saturday, May 13th and 27th**, in The Pathway Center. Come early for coffee and donuts at **7:15am** with discussion and Bible study **7:30am to 8:30am**. We meet the **2nd and 4th Saturdays** of the month. If you have questions, please feel free to contact Chuck Deuth at **480-766-3626**.

Calling All Solos

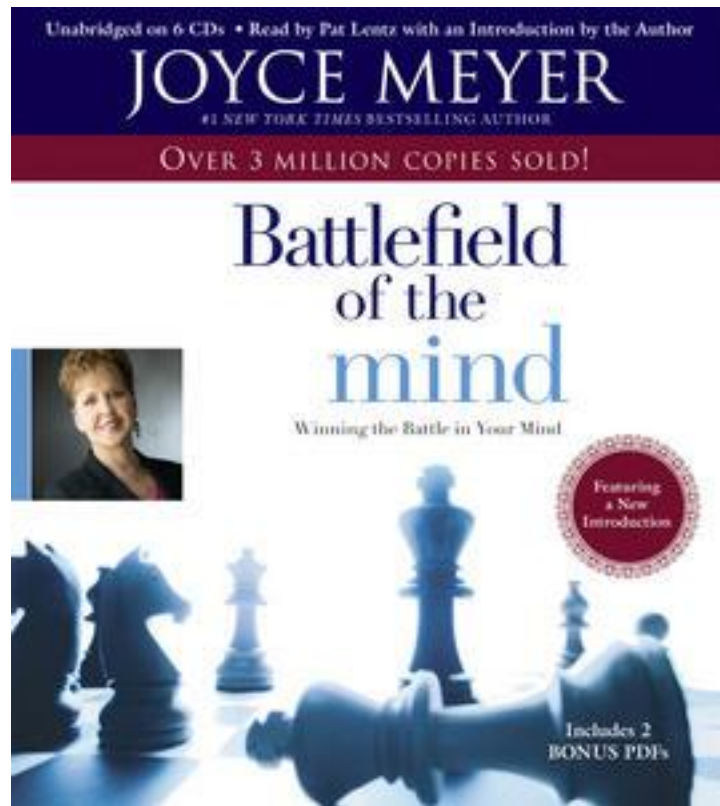
This church singles group has been active since last fall with monthly activities including game nights, a concert, a movie, and the Luminaries’ walk.

SOLOS May event is a Game Night scheduled for **Saturday, May 20th, at 6pm** in The Pathway Center, North Conference Room. Snacks may be provided by those whose last names begin with letters A to L. (Sweet treats by A-F; salty ones, G-L). Drinks are provided. All singles are welcome to attend for an evening of fun and fellowship. Invite a friend! For further information or questions contact JoAnne McCay at **480-694-4150**.



Women's Ministries

Join us in the New Year as we walk through the bible study of JAMES and the book study "Battlefield of the Mind". We will have weekly assigned reading in James as well as the book. 90% of our time in class will be walking through a study guide of James and 10% will be answering questions from your book reading. Our opening study will include a teaching on "Discernment", an overview of James and chapters 1-3 of the book. We continue on **Tuesday evenings, May 9th and 23rd and Thursday mornings, May 4th and 18th.**



Grace Girls 2017 Study "Battlefield of the Mind" By: Joyce Meyer

Tuesday evening opening: January 3, 2017, 6:30-8:45pm, The Pathway Center
Schedule: January 3, 17, 31, February 28, March 14, 28, April 11, 25, **May 9, 23**

Thursday morning opening: January 12, 2017, 8:45-11:00am,
The Perfect Place – Childcare provided
Schedule: January 12, 26, February 9, 23, March 9, 23, April 6, 20, **May 4, 18**

Please RSVP or sign up today: gracegirls@rslcs.org Annie Wolf at 480-203-1880
<http://www.rslcs.org/ministries/womens-ministry/GRACEGIRLS/Studies>

Risen Savior's Vacation Bible School

Risen Savior Invites Children to a Cross Culture VBS: Passport to Peru



A summer kids' event called **Passport to Peru VBS** will be hosted at Risen Savior from **June 26th to June 30th**. Passport to Peru is like taking an adventurous trip to Peru! Kids will sing catchy songs, play high-energy games, dig into tasty Peruvian treats, experience cool Bible adventures, collect Bible Memory Buddies, and explore what daily life is like for kids in Peru. Plus, kids get to watch short, captivating videos each day that provide a peek into Peru and the everyday life of kids who live there! Every day concludes with a Closing Celebration that gets everyone involved in living what they've learned. Family members and friends are encouraged to join in daily for this special time at 11:00am.

Passport to Peru VBS is for kids from 3 years old to 10 years old and will run from 9am to 11:30am each day. Doors open at 8:30am. Older kids, teens, and adults are welcome to join in the fun by volunteering. Registration for both participation and volunteering can be done online at www.rslcs.org. For more information, call **(480) 802-1505**.

Sunday Volunteer Sign-up Process

Our Sunday morning volunteer positions are scheduled through Planning Center. **We are using a tool in Planning Center called Sign-up-Sheets.** Rather than the office scheduling you, **now you will be able to choose which Sundays/service you'd like to serve.**

At the beginning of each month you will receive an email asking you to select which Sundays you would like to serve. These dates will be saved in your Planning Center account and you'll receive reminder emails as the date approaches.

We know that some of our married couples that use Planning Center share the same email address. If you do, here's what we need ONE of you to do: (One of you may keep your current password, but the other needs to create a new one). Enter the link to get to the sign-in page of Planning Center at <https://accounts.planningcenteronline.com>. Type in your email address and click the checkmark button. **Remember, if you share an email address with another Planning Center user, you must keep track of which account you're accessing when you are signing up or making changes to your schedule.**

Another hint: any time you're in Planning Center you can identify the account by looking at the top right of your browser window. **Thank you for your patience as we continue to learn this software.** Please call Susan Myres with questions, **480-895-6782.**

Altar Guild

If you would like to serve on Altar Guild and have questions, please contact Linda Peiffer at **480-993-6083** or Joan Lange, **602-405-8910**



Fellowship

Join us for coffee and donuts in-between services on the patio. It's a great opportunity to meet new people and to sign up and serve.

Caring Ministries Team

Seniors, if you are looking for information regarding transitioning into Independent or Assisted Living, contact PACE (People, Access, Community, Education) at **480-246-3515**. They will help you make informed decisions and their housing directory will help you narrow your options and make the process easier. You can also find them on the internet at www.seniorhousing.org.

Blood Pressure Screening continues on the **2nd Sunday** of the month in the Church hallway. Our next meeting will be in the Church Conference room on **May 16th**. If you are interested in serving on the Caring Ministries Committee (you do not have to be in the medical profession), please contact: Nancy Gooding at goodingpn@wbhsi.net.

Caring Ministries Emails

If you or someone you know would like to notify the church of a surgery, hospitalization or other care emergency, please email visits@rslcs.org. Please include the facility and contact number. For prayer submissions to the News & Notes weekly email prayer partners, please email prayers@rslcs.org.

Prayer Shawl Ministry

If you knit or crochet and wish to be a part of the team that knits or crochets these shawls, please contact Nancy Gooding at goodingpn@wbhsi.net.

These shawls are given to shut-ins, someone grieving a loss, hospitalized, etc. If you know of someone, please contact Pastor Mark. Enclosed with each shawl is this lovely prayer.

*This shawl was created especially for you
With love and prayers,
May God who formed your being,
Who knit you together in your mother's womb,
Who gave you the breath of life,
Renew you this day and give you hope
To sustain you.
May this prayer shawl be a sign of Christ's
Healing presence.
May it warm you when you are weary:
May it surround you with comfort to ease
Your suffering;
May it encircle you with caring when you
Are in pain.
Wear this prayer shawl and remember
Jesus loves you.

Risen Savior Lutheran Church
Care Committee*

Prayer Warriors

Prayer Warriors meet weekly at The Pathway Center where they pray for everyone on our prayer list. They would also like to send cards to those in the military and on missions, so if you have an address for them, please include it when completing your prayer request or send it to prayerwarriors@rslcs.org.

The Perfect Place



Jennifer Jenkins loves the Perfect Place. She loves the games, especially Yahtzee and she thinks the staff is wonderful. She has a great laugh and we all laugh with her. Jennifer is a very special girl; blind since birth she leads the daily devotional reading from a Braille Bible. Educated in a preschool program at the Foundation for Blind Children and public schools she graduated from Coronado High School. What an active young woman! She has been an actress, a dancer, and a singer most of her life. And she was water skiing at six!

She now lives with her sister and her family. When asked what she would like to do with her life she answers, “do what my dad does”. He is on the

Board of Directors for the Foundation for Blind Children in Phoenix. She is very proud of her father. We at Perfect Place think that she might just get there.

The Perfect Place is located on the campus of Risen Savior Lutheran Church in Sun Lakes. We are a nonprofit faith based adult care center. Our volunteers are knowledgeable of Alzheimer’s, dementia, developmental disabilities, and various adult neurological challenges. Most of us have had a loved one for which we were a caregiver. We enjoy what we do.

If you believe your family or caregiver would benefit from this service, contact Eileen Curran or Judy Waltersdorf at The Perfect Place, **480-895-2892**.

Contributions from service organizations and personal donations to our scholarship fund allow us to provide financial assistance. Ask for a receipt. We are a 501c3.

ThePerfectPlace85248@gmail.com, 480-895-2892

9am-noon Mon, Wed, Fri – 1pm-4pm Mon, Tues, Wed, Fri, All Day Option-Mon, Wed, Fri

Missions

Lutheran Braille Workers

We meet on **Tuesdays, at 8:30 – 11:30am** in the Fellowship Hall. If you have any questions call Kay Wellik at **480-838-4552**.

Piece Maker Quilters

The quilters thank members of the congregation for their donations of gently used sheets which are used for the backing of the quilts. One of our quilts was donated to LWML for their drawing during the Spring Luncheon.

16 quilts were given to Nancy Gooding for the Salvation Army, another 16 quilts were donated to The Phoenix Rescue Mission.

We are working on quilts for the Ignite Confirmation Ministry to take with them on the Week of Hope mission trip to San Diego where they will be working with a food bank and homeless shelter.

If you have any questions or interest about our group, please stop by on **Wednesday** afternoon between **1:00pm and 4:00pm** in the Fellowship Hall. You may also contact Sandra Devine at **480-207-6177** or Barb Fox at **480-814-8441** anytime.

Lutheran Women's Missionary League (LWML)

Membership in the Lutheran Women's Missionary League consists of women who are communicant members of the LCMS congregations and who participate by promoting the LWML programs. This is an excellent opportunity to experience Christian fellowship with other women of Risen Savior Lutheran Church.

A huge **THANK YOU** to all who participated in the LWML Women's Luncheon. It was a wonderful time with lots of visiting, a delicious lunch, speakers and table sponsors, etc., etc. A warm thank you especially to the handsome gentlemen who escorted women to their tables and served us so graciously. Thank you! The monetary proceeds from the luncheon will help fund the IGNITE Confirmation Ministry Week of Hope Mission Trip and the Antioch Center for Training and Sending (ACTS).

A \$100,000 Grant was awarded to the LCMS National Housing Support Corporation through the LWML mission grants for the 2015-2017 biennium. This Helping Hands Initiative supports the critical home repair needs of low-income, disabled and/or elderly residents near LCMS congregations. By providing for their neighbors' bodily needs, the opportunity can arise for opening doors for God's Word and the Sacraments to reach unchurched individuals and families. Please pray for these mission opportunities! Thank you!

The next LWML meeting will be **May 11th at 1:00pm** in the Pathway Center.

LCEF

Align Your Investments with Your Personal Values

Lutheran Church Extension Fund (LCEF) empowers ministries to share the Gospel and build God's kingdom through Word and deed. An investment with LCEF puts your blessings from God to work for ministries, supporting what you value most. Making disciples is something we all can share through the LCEF ministry. There are a variety of LCEF investments to suit your needs. Find out more at lcef.org or call **1-800-843-5233**.



Active Duty Military Personnel

We would like to acknowledge and pray for all active duty military personnel associated with RSLCS. Please contact us on the prayer request line prayers@rslcs.org, on a pew card or by phone with their names. Cards will be sent if you include an address. First names are now posted in the display case outside to the left of the Narthex.

The Service flag is an official banner authorized by the Department of Defense for display by families who have members serving in the Armed Forces during any period of war or hostilities the United States may be engaged in for the duration of such hostilities.

Chandler Salvation Army Support

The food drop-off for the Chandler Salvation Army is the first **Sunday** of each month. Please bring your non-perishables to the **cabinet** located in the hallway by the Fellowship hall. The donation box for clothing and small household goods for the Salvation Army is located in the northwest corner of the church parking lot.

Lutheran Social Services of the Southwest



Showing kindness, doing justice and serving those in need, we are located statewide and serve 10 counties across Arizona. Arizona nonprofits do many things well that make this state a better place to live but we do this with the support of many partners. You are the rock stars. Thanks for creating the kind of community God envisions for Arizona.

To learn more about the work of LSS-SW, please visit their website and subscribe to their e-newsletter, www.lss-sw.org.



For All Area Women & Men

Thursday, May 4th, 2017

SunBird Golf Resort Ballroom

**6250 S. SunBird Blvd.,
Chandler, Az. 85249**



**Entrance off Riggs Rd. between McQueen & Cooper. Turn south
on Championship to enter SunBird.**

9:30 a.m. Pre Program Patriotic Music

10-11:30 Program:

Music

Scripture

Prayer

Special Speaker: Len Munsil

President Arizona Christian University, Lawyer,
former candidate for governor and
Founder Center for Arizona Policy.

Author TRANSFORMING CULTURE WITH TRUTH

No admission fee and reservations are NOT required

**This event is Sponsored by
Sun Lakes Women's Connection and
SunBird Prayer Group**





Risen Savior 2017 Spring Food Drive April 17- May 7

Three years ago we joined together to institute the Risen Savior 2014 Spring Food Drive. Later in the year we followed with our first Thanksgiving Turkey Drive, which was quickly followed with the Community Christmas Concert, where we accepted cans of food at the door. Since the Spring of 2014 we have conducted nine food drives that have combined to deliver almost 20 tons in food assistance to our Chandler neighbors in need through the Chandler Food Bank. God has truly blessed these programs to serve others.

It is probably safe to say that community outreach and sharing God's blessings with our neighbors in need has become part of our DNA here at Risen Savior.

Before we held our first Spring Food Drive in 2014, Pastor Ron delivered a sermon in which he spoke of the importance of community outreach, and reminded us of Jesus' miracle of loaves and fish where He provided His Disciples with five loaves and two fish and said **"you feed them"**, referring to the multitude of over 5,000.

Although we all knew that we could not feed over 5,000 with 5 loaves and 2 fish, we did prove that when we all join together as one, and ask God's blessings on our efforts, we can achieve amazing results. In fact, that 2014 Spring Food Drive yielded 7,644 pounds of food ... enough to feed 5,972 people.

It's true. When we all join together we can accomplish incredible things. But there is a catch ... *we need everyone's help to make it happen.*

Let's join together and make our neighbors who struggle to put food on their tables a high priority, by all joining together to eliminate hunger in Chandler this summer.

Looking For Singers

A schedule is being prepared for singers willing to sing solos or duets at the **11:30 services** in **June, July, and August**. If you are interested in doing that, please contact either Joel Endicott or Bill Bade to be scheduled.

Volunteers Needed to Tidy Up Sanctuary

Risen Savior is looking for someone to share volunteer duties to tidy up the Sanctuary on alternate Mondays. Duties would include: retrieving last Sunday's bulletins, News & Notes and readings from the lectern, Pastor's benches, Elder's Closet, prayer sheet on altar, reserve five copies of last Sunday bulletins and News & Notes for lost and found table and set out Portal of Prayers at welcome booth and on cabinets in back of church. If you are interested in helping out, please contact the church office at **480-895-6782**.

Lost and Found

Our lost and found is located in the hallway outside the Conference Room in the church. Please check it out - we have many lost treasures, one of them may be yours!

Monthly Newsletter Articles

Please have your newsletter articles into the church office by the **10th of each month**. Send your articles to: news@rslcs.org. The newsletter will go out by the first of the month.

Update Contact Information

For those who have a change of contact information, please remember to advise the church office of your updated contact information so you can receive the news at Risen Savior. Call **480-895-6782** or email news@rslcs.org.

Risen Savior Foundation

Consider supporting RSLCS through its 501c3 Foundation. Gift planning through your wills and trusts will support the ministries of the church for years to come. All gifts are tax deductible as allowed by law.

For further information or to contribute to the foundation through your estate planning or gifts, please contact Foundation President, Chuck Deuth, at **480-766-3626**.

Risen Savior Monthly Financial Review

The following is a summary of financial activity for Risen Savior Lutheran Church. If you would like more detailed reports, please contact our Business Manager, Susan Mello at mellos@rslcs.org.

Financial Summary for March 2017 and FYTD17:

Did you know?

Since October of 2016, the generous congregants at Risen Savior have donated \$49,000, beyond their regular tithe, to the **Debt Reduction** fund. These donations are applied as **extra** principal payments to our mortgage above the monthly payment amount. Over the remaining term of the mortgage, this payment will **save our congregation over \$62,700** in interest and pay off the loan 5 months early.

Thank you for your continued generosity.

- March was another excellent month with Operating Cash continuing to increase and a forecast to meet and exceed the budget by the end of FY17.
- Due to the effect of Proposition 206 on employee pay and benefits, there was a price increase in the Early Learning Center beginning April 24, 2017. This will help to cover the additional cost of salary and benefits for our teachers.

The generous supporters of Risen Savior and our new Kindergarten have made it possible, through donations to the Arizona Lutheran Scholarship Organization (ALSO), to provide scholarships to ALL our 2016-17 Kindergarten students. **Thank you to all who donated to ALSO and made Christian education a reality for 17 students.**

| High Level Statement of Financial Income and Expense | | | | | | | |
|--|---------|---------|---------|-----------|-----------|----------|-----------|
| | Mar-17 | Mar-17 | \$ Over | FYTD17 | FYTD17 | \$ Over | Annual |
| | Actual | Budget | Budget | Actual | Budget | Budget | Budget |
| Giving | 149,426 | 122,380 | 27,046 | 993,236 | 915,260 | 77,976 | 1,257,400 |
| All other income | 5,139 | 3,720 | 1,419 | 39,158 | 33,440 | 5,718 | 44,600 |
| Total Church Income | 154,565 | 126,100 | 28,465 | 1,032,394 | 948,700 | 83,694 | 1,302,000 |
| | | | | | | | |
| Early Learning Center | 119,724 | 123,915 | (4,191) | 891,212 | 903,380 | (12,168) | 1,214,700 |
| | | | | | | | |
| Total Operational Income | 274,289 | 250,015 | 24,274 | 1,923,606 | 1,852,080 | 71,526 | 2,516,700 |
| | | | | | | | |
| Operational Expenses | 209,001 | 195,335 | 13,666 | 1,752,907 | 1,809,625 | (56,718) | 2,404,595 |
| | | | | | | | |
| Net Income/(Loss) | 65,288 | 54,680 | 10,608 | 170,699 | 42,455 | 128,244 | 112,105 |
| | | | | | | | |
| High Level Statement of Operational Cash | | | | | | | |
| March 2017 | | | | | | | |
| Cash/Current Assets 03/31/17 | 650,585 | | | | | | |
| Donor Restricted Funds | 197,669 | | | | | | |
| Board Designated Funds | 349,257 | | * | | | | |
| Net Operational Cash 03/31/17 | 103,659 | | | | | | |
| | | | | | | | |
| Cash/Current Assets 02/28/17 | 592,918 | | | | | | |
| Donor Restricted Funds | 199,316 | | | | | | |
| Board Designated Funds | 348,231 | | * | | | | |
| Net Operational Cash 02/28/17 | 45,371 | | | | | | |
| | | | | | | | |
| Net Operating Cash Change | 58,288 | | | | | | |
| | | | | | | | |
| * Adjusted for LED light install Work in Progress | | | | | | | |

Happy Birthday

| | | | |
|-------------------|-------|---------------------|-------|
| Ruth Hiner | 05/01 | Timothy Hoffmann | 05/09 |
| Dave Olson | 05/01 | Don McCarthy | 05/09 |
| Elaine Price | 05/01 | Mia Newell | 05/09 |
| Vickie Ayres | 05/02 | Sophie Schaefer | 05/09 |
| Rosemary Hopkins | 05/02 | Bill Giessing | 05/10 |
| Abbey Mello | 05/02 | Michael Bonsaver | 05/11 |
| Jessi Schulze | 05/02 | Joan Gambadoro | 05/11 |
| Roberta Hellman | 05/03 | Mervin Lemburg | 05/11 |
| Gary Swallows | 05/03 | Phillip Denisuk | 05/12 |
| Peggy Denisuk | 05/04 | Julia Teuscher | 05/12 |
| Eugene Aultman | 05/05 | Kaden Karst | 05/13 |
| Charlene Clausen | 05/05 | Katherine Alexander | 05/15 |
| Mike Schulze | 05/05 | Tiffany Fauth | 05/15 |
| Judi Badger | 05/06 | Ricci Herb | 05/15 |
| Deborah Brettfeld | 05/06 | Troy Hickel | 05/15 |
| Samuel Derr | 05/06 | Alexander Dunning | 05/16 |
| Brenda Konicke | 05/06 | Irma Naumann | 05/16 |
| Steve Souther | 05/06 | Manford Blagsvedt | 05/17 |
| Marie Waskel | 05/06 | Addison Grainger | 05/17 |
| Lou Martin | 05/07 | Matthew Kasel | 05/17 |
| Haylie Peterson | 05/07 | Jane Meyer | 05/17 |
| Madasyn Peterson | 05/07 | Marilyn Tarchinski | 05/17 |
| Matthew Torre | 05/07 | Lowell Fisher | 05/18 |
| George Kanda | 05/08 | Barbara Fox | 05/18 |
| Jason Pagnard | 05/08 | Erv Jacob | 05/18 |
| Georgene Quast | 05/08 | Carol Thomas | 05/18 |
| Alice Andert | 05/09 | Marlys Blinn | 05/19 |
| Adam Beadle | 05/09 | Dennis Rittenback | 05/19 |

| | | | |
|--------------------|-------|-------------------|-------|
| Kaylee Ross | 05/19 | Gerald Ahrens | 05/26 |
| Claudia Pagnard | 05/20 | Grace Norris | 05/26 |
| Paula Parker | 05/20 | Jim White | 05/26 |
| Marlene Trempe | 05/20 | Wayne Will | 05/26 |
| Laura Stahl | 05/21 | Lariat Windisch | 05/26 |
| Gary Bixler | 05/22 | Gertrude Kempinen | 05/27 |
| Hank Clausen | 05/23 | Robert Wall | 05/27 |
| Janet DeNomie | 05/23 | Teri Bitler | 05/28 |
| Justin Kniep | 05/23 | Bette Neff | 05/28 |
| Jacki Grainger | 05/24 | Jared Evans | 05/29 |
| Barbara Riley | 05/24 | Carolyn Singer | 05/29 |
| Stevan Slijepcevic | 05/24 | Tara Chavira | 05/30 |
| Harvey Zehnder | 05/24 | Jessica Combs | 05/30 |
| Lewis Barnhouse | 05/25 | Jessica Irick | 05/30 |
| Carson Petrie | 05/25 | Ilse Moore | 05/30 |
| Charles Wildberger | 05/25 | Augustine Padilla | 05/30 |
| Angela Adams | 05/26 | Wayne Chase | 05/31 |

Happy Anniversary

| | |
|---------------------------|------------|
| Gus & Josephine Tietbohl | 05/16/1953 |
| Wendell & Francis Robson | 05/22/1953 |
| Dick & Lois Koskovick | 05/28/1955 |
| Edward & Shirley Treadway | 05/06/1956 |
| Donald & Muriel Nelson | 05/29/1960 |
| Bill & Polly Giessing | 05/19/1962 |
| Lloyd & Linda Fish | 05/02/1964 |
| Bill & Karen Insel | 05/02/1964 |
| George & Karen Kanda | 05/07/1966 |
| Dennis & Alice Andert | 05/13/1967 |
| James & Arlene Kolanoski | 05/20/1967 |
| Randy & Linda Buns | 05/11/1968 |
| Ralph & Tenni Annen | 05/15/1970 |
| Matthew & Millie Torre | 05/17/1970 |
| Bill & Linda Griffin | 05/12/1973 |
| Hank & Charlene Clausen | 05/09/1975 |
| Charles & Kathryn Deuth | 05/31/1975 |
| Thomas & Kathy Adams | 05/28/1977 |
| Bryan & Kathleen Newman | 05/27/1979 |
| Guy & Beth Drake | 05/28/1983 |

| | |
|----------------------------|------------|
| Steve & Deb Ellis | 05/17/1986 |
| Gabor & Karen Selak | 05/13/1989 |
| Don & Judi Badger | 05/26/1990 |
| Gary & Margo Huber | 05/21/1993 |
| William & Eva Ellis | 05/28/1993 |
| David & Danielle Kim | 05/06/1995 |
| Aaron & Leigh Dow | 05/22/1995 |
| Dave & Julie Constance | 05/27/1995 |
| Bill & Deborah Winsberg | 05/18/1997 |
| Henry & Gail King | 05/26/1997 |
| Rick & Patricia Park | 05/02/1999 |
| David & Sarah Heese | 05/08/1999 |
| Russ & Bernita Grgich | 05/16/1999 |
| Kevin & Janet DeNomie | 05/20/2000 |
| Jason & Rebecca Pagnard | 05/19/2001 |
| Peter & Beth Moody | 05/10/2003 |
| Robert & Carole Nolawski | 05/17/2003 |
| Raymond & Kathy Long | 05/24/2003 |
| Nate & Courtney Erickson | 05/04/2008 |
| Wes & Linda Cassetti-Davis | 05/12/2010 |

Advertising Information



Valley of the Sun Cemetery & Mortuary
10940 E Chandler Heights Rd.
Chandler, AZ 85248

As a RSLCS Church Member, I am committed to helping fellow parishioners make difficult decisions concerning their final arrangements. I specialize in National Transferable pre-arranged cremations, funerals, burials and other unique requests such as Travel & Relocation Plans. Bring this ad to Holly for a *FREE* personal planning guide. Pre-planning discounts and payment plan options are available.



Holly Hiner
Family Service Counselor

Cell 480/415-3925
holly.hiner@Dignitymemorial.com

Advertising Rates and Requirements

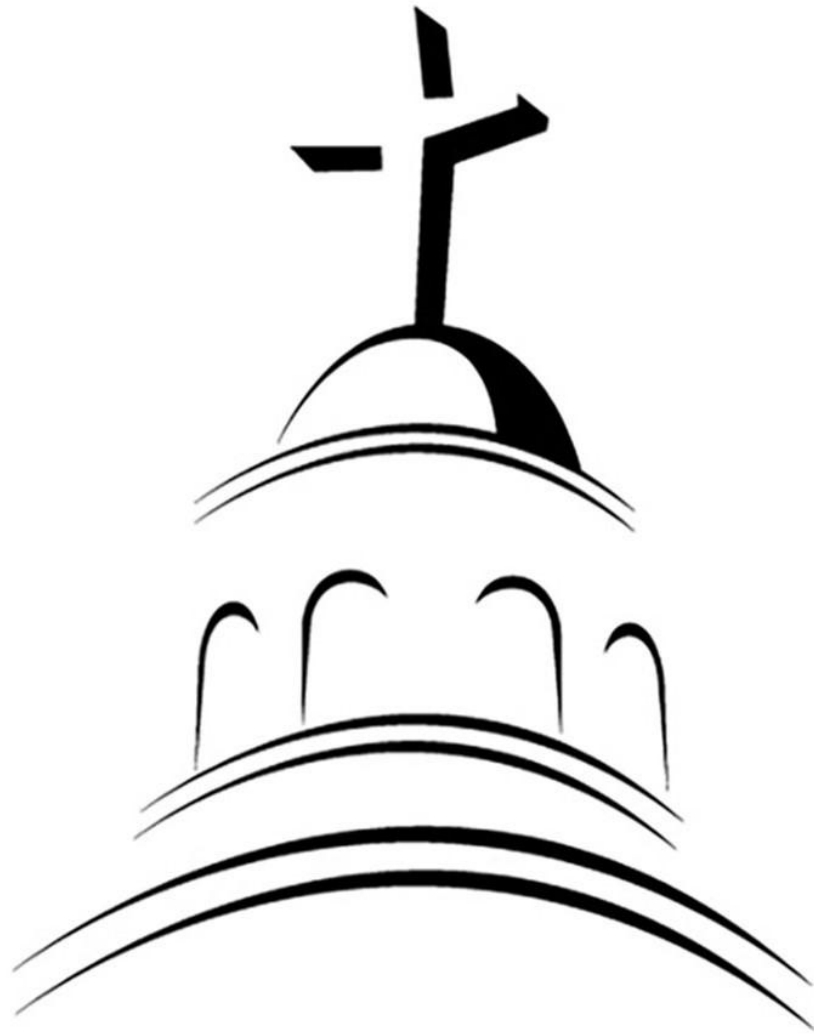
Space permitting, each advertiser will be allowed one ad per month.

1. Each ad 2" x 3.5" in size (business card size) will cost \$20 per issue, or \$200 yearly. Non-member prices are \$25 per issue or \$250 yearly.
2. One-third page ad will cost \$30 per issue, or \$350 yearly. Non-member prices are \$35 per issue or \$400 yearly.
3. Two-thirds page ad will cost \$40 per issue, or \$400 yearly. Non-member prices are \$50 per issue or \$450 yearly.
4. Please provide one business card for ad copy to RSLCS office along with payment.
5. Please make checks payable to Risen Savior, attention RSLCS Newsletter.

Terms & Conditions:

All rates are subject to change without notice. In the event of a rate change, all advertisers with standing orders will be given 30-days notice of the new rates.

All advertising is subject to acceptance by Risen Savior. Questionable, confusing, misleading, controversial, or fraudulent statements will be declined. RSLCS reserves the right to reject any and all advertising, which they feel is not in keeping with the publications' standards and principles.



RISEN SAVIOR

LUTHERAN CHURCH